

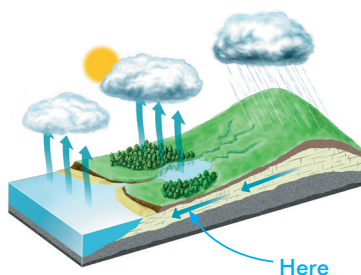
# **WATER INFORMATION**

**Howards Water Softeners**

## What's this all about?

The mains water in this area is HARD, and your local water supplier has no obligation to soften your water supply, despite the obvious damage it can do to your home.

This booklet will help you recognise the costly effects of hard water in your own property, and advise you of the solution.



## Where does hard water come from?

Naturally soft rain water flows underground and picks up the minerals calcium and magnesium.

These are the minerals that make water hard.

Guidance issued under the Building Regulations indicates that where the water hardness exceeds 200 ppm, provision should be made to treat the feed water to water heaters and the hot water circuit of combination boilers to reduce the rate of accumulation of lime scale and the consequent reduction in energy efficiency.

Whilst this guidance only applies to new houses or the fitting of a new boiler, it makes sense to do something before your existing system scales up.



## Fitting a water softener

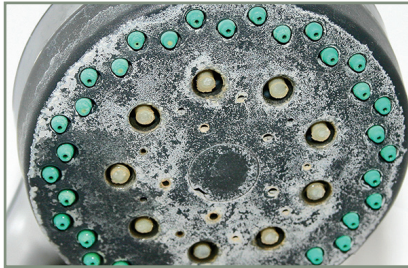
Fitting a water softener is a very simple solution but you've probably got some questions:

- What are the benefits?
- How do they work?
- Where can they be installed?
- What maintenance do they need?

This booklet is designed to answer all these questions.

## There are also benefits for your bathroom:

### WITH HARD WATER



Shower head scales up, first sending jets in all directions - then reducing flow to a trickle



Shower door will be covered in spot marks



Scale deposits will form on taps

### WITH SOFTENED WATER



Shower head will always spray like new



No unsightly spot marks - just needs an occasional wipe-over



No crusty scale deposits on taps - only a quick wipe needed to keep them sparkling

# Softened water is also much nicer to wash in

## WITH HARD WATER



A soapy scum will quickly form around the edge of the bath and sink



Scum is left on the surface after the water has drained away

## WITH SOFTENED WATER



Softened water completely eliminates scum and you get a nice lather



There simply isn't any scum and the occasional wipe is all you need



It will take 50% less soap and shampoo to produce a much better lather. Hair will also be shinier and more manageable and skin will feel softer.



# Benefits extend to the rest of the home

## WITH HARD WATER



Your drainer gets covered in spot marks and needs constant cleaning

## WITH SOFTENED WATER



With softened water there is no hardness, no spotting and no constant cleaning!



More than twice as much soap powder compared with softened water



Just one table spoon of soap powder needed



Descalers and dishwasher salt are needed to minimise hard water damage to appliances



No descalers are necessary and 50% reduction in general household cleaning products required

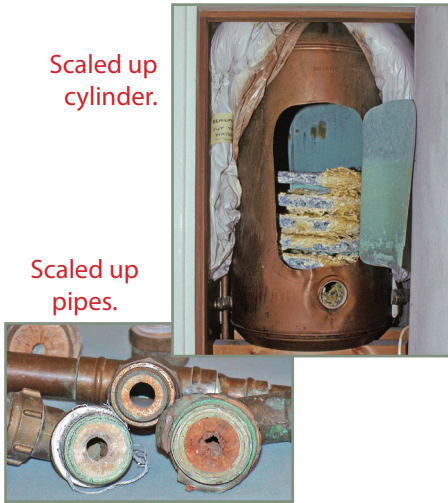
# Here are the important benefits that you don't see:

## WITH HARD WATER

The copper cylinder scales up. This makes it work harder and become less efficient.

Scaled up cylinder.

Scaled up pipes.

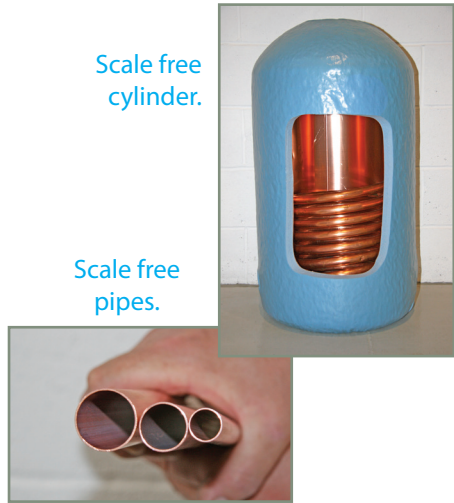


## WITH SOFTENED WATER

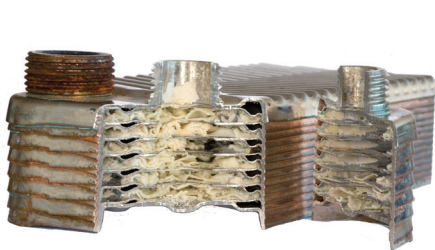
Softened water keeps your cylinder clear of scale. It will even dissolve away any existing scale.

Scale free cylinder.

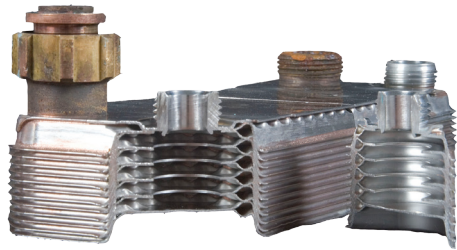
Scale free pipes.



$\frac{1}{4}$ " of scale in a copper cylinder will increase heating requirements by 50%!



The scale build up in this modern condensing boiler's heat exchanger will seriously reduce the boilers efficiency and the flow of hot water.

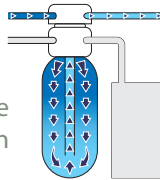


This is a similar heat exchanger opened up to show what they should look like when there is no scale in the water.

## How does a water softener work?

Water softeners use "ion exchange resin" to remove the hardness.

1. Hard water enters the resin bed
2. The hardness minerals are trapped in the resin
3. Softened water to house
4. Salt periodically flushes the hardness minerals down the drain



Water softeners will fit comfortably under the sink, in the garage and even in the basement or loft space - wherever it's most convenient. A water softener needs minimal maintenance, can easily last twenty years and will pay for itself within five years in lower fuel bills and savings on soaps, detergents and cleaning materials - not to mention extending the life of your appliances!

